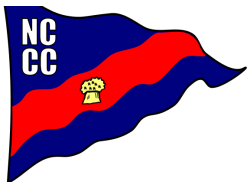


**Ditchcrawler**

**Congratulations!**



**New Owners of NCCC Premises  
What an achievement**



**Spring / Summer 2025 Issue  
Quarterly Newsletter for  
North Cheshire Cruising Club**

## **North Cheshire Cruising Club**

The Wharf, Buxton Road, High Lane, Stockport SK6 8AA

### **Your Editorial Team**

Heather Stanley (NB Royal Oscar)

Catherine Jackson (NB Aalin)

Approval - The NCCC Board

### **Contact Us**

General Email : [info@nccc.org.uk](mailto:info@nccc.org.uk)

Editor : [editor@nccc.org.uk](mailto:editor@nccc.org.uk)

Website : [www.nccc.org.uk](http://www.nccc.org.uk)

### **Social Media Platform**



**TheNorthCheshireCruisingClub**

#### **Summer / Autumn Issue**

**Final Date for Articles 28 August 2025**

**Publication Date 14 September 2025**

**If you have a contribution for the next issue, please let the Editor have your article no later than 28 August 2025 If you have any information that you would like to share with your fellow members please email me. [editor@nccc.org.uk](mailto:editor@nccc.org.uk)**

## **Commodores Message**

Since the last edition of the Ditchcrawler we have had the Fitting Out Supper, Easter trip to Buxworth and the VE day 80th Anniversary celebration combined with a party for our purchase of the club site from Canal and River Trust (C&RT). All of these I am sure will be covered in further detail in this magazine, and the VE Day Ditchcrawler Special. Many thanks to all those who help made these events happen.

As you will be aware due to the breach above Bosley we had to cancel the planned cruise on the Caldon. If the information from the AWCC is correct, it would seem C&RT have no intention of letting us will of the top anytime soon, so I am inclined to cancel all cruise plans, until Bosley is actually open.

Will let you know when we are going as soon as I know.

Ian Jewell

### **Piling Team Required**

We are looking to start the piling again, but need some volunteers to make another team.

We have one team at the moment, but need another five volunteers to form a second team.

The work will take place during the week and all training will be given. You do not have to be physically fit for one of the jobs which would be using the hammer.

Your help would be very much appreciated, so if you are interested please contact Eric Roberts or Mike Robison.

## **Cruising Club Locks a Secure Future for Members and Invites High Lane Residents to Join the Celebrations**



For many decades Members of North Cheshire Cruising Club, sited adjacent to the Macclesfield Canal, have aspired to own their historic Club building, the adjacent Wharf Cottage and surrounding land to enable them to restore and protect its significant heritage value.

The proactive and visionary Board have now signed and completed the deal with Canal & River Trust.

A grand celebration took place on Sunday May 11 at the North Cheshire Cruising Club site from 12:30pm onwards. Local residents were invited to join the party and get into the spirit of this landmark achievement with entertainment from the Union Chapel Jazz Band and acoustic artist Burkenhoff, a barbecue, 'Best Dressed Boat' competition and a boat jumble.

The vibrant event was also a celebration of the 80th Anniversary of VE Day and the accompaniment of a local traditional Jazz Band was a perfect tribute to such a remarkable, historic and landmark day.

The catalyst for the opportunity to purchase the site was in 2023 when William Walker, former tenant of Wharf Cottage, a devoted canal stalwart and former long-time employee of British Waterways (now Canal & River Trust) suddenly passed away. He was a highly valued Member as well as a Director and Archivist of the Club and it was his absolute dream for the site to be acquired and a Trust established to secure ongoing third party funding.

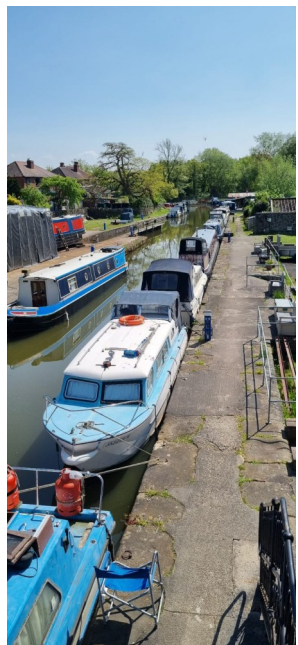
The North Cheshire Cruising Club, which stands proudly adjacent to the Arm, is the longest surviving Cruising Club on the Narrow Canal system. It can certainly boast a very colourful history as well as strength, durability and longevity in keeping with its thriving Membership.



Mike Robison, Club Chairman says “I am absolutely elated that we have secured this opportunity to own the site thus giving us the opportunity to turn it into a thriving community hub as well as a really high profile Cruising Club with first class facilities. There is a tremendous “can-do” comradeship and professional attitude amongst our Members. We have carried out the dredging and piling of the Canal Arm, landscaping and waterside enhancement all from our own resources and volunteer efforts and their consistent devotion to the Club.

Throughout its 80 years of existence the Club has maintained a vibrant programme of activities with everything from Commodore’s Cruises, Boat Rallies, excavation of old working boats in the 1950’s, Easter Bonnet competitions, Quiz and Film evenings and even pantomime’s and live performances. We are very proud of what we have achieved and the legacy we have now created to fulfil the fervent wishes of William Walker and those past members who have not only bequeathed money but worked hard over several decades to build a deposit fund for this purpose.

We look forward to unlocking many more years of Member activities, creating a Trust to attract third party funding and expanding our engagement with our local community”.



The High Lane Arm, on the Macclesfield Canal, has always been, and still remains, a most significant part of the Canal network. In its heyday, there were impressive tonnages of manufactured goods, raw materials, coal and agricultural produce handled by the Macclesfield Canal Company Transshipment Warehouse.

High class hat manufacturers such as Christy & Co, Chestergate Hat Manufacturing and Battersby & Co all had their raw materials such as beaver furs and pelts and high quality alpaca, all delivered to the High Lane warehouse as well as dealing with the despatch of finished goods for export markets in America, Canada and Europe.

Mike Robison concludes “The North Cheshire Cruising Club has a sustainable and exciting vision for future years with aspirations to become a strong “Hub” in the village community as well as launching a programme of funding and events to work with local school children and other like-minded voluntary groups and associations. We are totally dedicated to launching an inclusive way forward that bridges the past, present and future of this highly regarded historic High Lane site”.



Thank you to Heather Rowley-Dixon for writing this press release, distributing to various media outlets, and organising the press to attend the VE Day event on May 11,

Pictures of the arm Heth Stanley / Pictures of Mike Jackie Robison

Thank you to everyone who was involved in the purchase of North Cheshire Cruising Club.

## Work Parties

A lot of work has taken place since the last update both on the work parties and during the week including dismantling the double sheds, sorting the scrap and wood. Dredging, slipway tidying and general housekeeping on the arm. Below are a few pics showing some of the work done at the triangle.



## Our New Dedicated Storage Room

Work has finally finished on the dedicated storage room. All the items that were storage in the old wharf office are now in their own room. This room and the new wharf office were part of the changes that were taken to the Board for approval over 12 months ago. More on the wharf office later. Thank you to Pam Russell and Janet Tattersall for sorting all the boxes and relabelling where necessary, with help from me as well (Heth).





## Whiteley Green Work Party

With the agreement of Eric, Steve (NB Aalin) and Tim (NB Sunbeam) went to Whiteley Green on Tuesday 13th May to do some more strimming, mowing and tidying up and collecting dead leaves etc. It's amazing how quickly the grass grows, given it was only about a fortnight since they last strimmed and mowed.

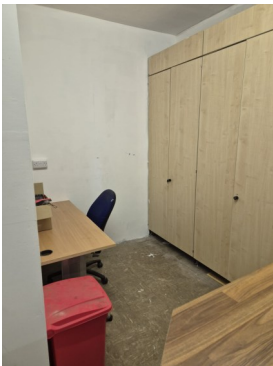
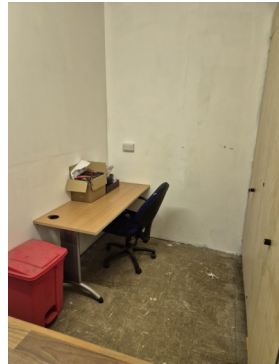
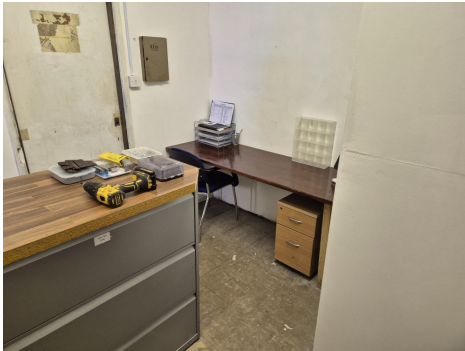
A couple of photos of them in action and a few passing by on board NB Aalin.





## The New Wharf Office

The new wharf office is nearly complete, just a few bits of electrical work as well as boarding up the old door way and a hatch to be build to complete, but it is now operational. I know that some people may not think it was necessary, but this saves the 'old childrens room' being used as a dumping ground. The pictures below show that it was all worth it. Two large storage cupboards, two large draw units and a couple of desks.



Thank you to everyone who has helped this project and the storage room come to fruition. Martin Tattersall, Bill Wilkinson, Mike Robison, Eric Roberts, Ian Jewell, Adrian Hambleton, Pam Russell, Heth Stanley, Jan Tattersall and anyone else who I may have forgotten. Everyone's help is very much appreciated.

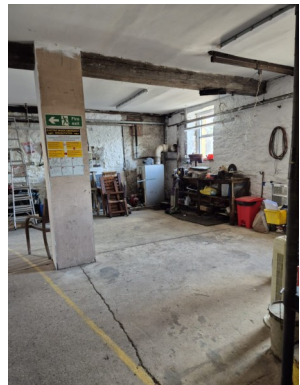


## Temporary Brew Room

There is one more room to sort out that will be the new canteen. For the time being we have made the old wharf office into a brew room where you can sit, eat and chat and be out of the workshop area.

More updates on the new canteen will follow in the next issue

## Workshop Before and After No Words Needed



## Memory Table



It has been a very sad couple of months, with the passing of three long serving, highly thought of members of North Cheshire Cruising Club.

Robert (Bob) Barlow, Marilyn Speechley and Ronald (Ron) Axon.

The club were pleased to offer the families the function room for the Wakes, and all the families thanked David Mason, NCCC's Bar Manager and flower expert for the beautiful flower displays that he did.

We now have in the club room a memory table where you can put your thoughts of each of the above in a book. There is also a dedicated page on the website to read the eulogies.

Its good to remember the happy times with each of the above members.

If you wish to read the eulogies, please go to [www.nccc.org.uk/members/celebration-of-life](http://www.nccc.org.uk/members/celebration-of-life)

## C&RT Update

There will be a further update on the progress of the work on the Breach at Macclesfield later this Month.

However, as this Spring had been the driest for many, many years, CRT have already announced restrictions / closures along the Trent & Mersey Canal in Cheshire.



## Easter Weekend Cruise to Bugsworth Basin

Many thanks to the Boats that attended the Easter weekend - Bliss, Hakuna Matata, Portia, Quantum, Meredith Rose, Gowker Lily, Candi and all those that attend by road for the quiz on Saturday night and the Easter Bonnets and ties on Sunday, when the weather was very kind to us. Thank you to Bill Jewsbury for organising all the questions who, unfortunately could not attend due to illness. (Sorry pic of Rob did not have a head shot on it)



Martin Tattersall



Geoff Taylor



Rob Shaw



Shirley Taylor



Jan Tattersall



Pam Russell



Michelle Shaw



George and Harriet Shaw



Quantum



**The winners of the Easter Bonnet and Tie event were**

**Best Tie : Geoff Taylor**

**Best Bonnet : Michelle Shaw**

**Best Childrens Bonnet : Joint Winners**

**George and Harriet Shaw**

**Best Dressed Boat : Quantum**

**This entry did not get to Bugsworth due to being too poorly to travel, but I could not leave it out. Always a winner : Ruth Sellars**





## Slipway Availability

Please see below the latest update for availability on the slipway.

The slipway calendar on our website is available to view for 2025 Here is a link to our calendar :

<https://calendar.google.com/calendar/embed?src=mikesniper1%40gmail.com&ctz=Europe%2FLondon>

There is currently availability as per the dates below. If you wish to take you boat out of the water – get your boat booked in as soon as possible

**June** - Available 1 booking - 19 to 26 June

**October** - Available 2 bookings - 16 to 23 and 23 to 30 Octber

**November and December** – both these months are currently free

Please contact Mike Robison to confirm your booking 07975 686707.

## Paint Shed Availability

If you need to go into either of the two paint sheds to have work done on your boat, then there is availability as follows

From May 19 through to the end of December.

As above please contact Mike Robison to book.

Prices for the paint shed are on our website and also in the workshop



## **Weekly Events**

- ◆ Friday Night Social in the clubhouse 7.30pm till late
- ◆ Sunday lunches restart on Sunday 5 October 2025

## **Monthly Work Party**

Second Saturday of each month with Pie or Sausages and a hot drink for £2.50 or you could have a pint at the bar (extra cost) lunch starts at 1pm. (please make sure you sign in to the book in the workshop)

- ◆ Saturday 14 June 2025
- ◆ Saturday 12 July 2025
- ◆ Saturday 9 August 2025
- ◆ Saturday 13 September 2025

## **Social Events**

- ◆ Saturday 23 August 2025 - Bank Holiday BBQ
- ◆ Saturday 18 October 2025 - Laying Up Supper
- ◆ Saturday 6 December 2025 - Christmas Party
- ◆ Sunday 21 December 2025 - Brass Band Night (REVISED DATE)

## **Commodore Cruises (depending on C&RT Breaches)**

- ◆ Friday 30 May to Sunday 29 June (Summer Cruise)
  - Option A—Option A - Cruise to Birmingham (2 weeks)
  - Option B - Warwickshire Ring (4 weeks includes option A)
- ◆ Friday 29 August to Saturday 20 September - destination tbc

**Weekend Whiteley Green Cruise**  
**Catherine & Steve Jackson, NB Aalin / Ruth & Tim Smith,**  
**NB Sunbeam: part 1**

The weather forecast for the weekend of the 26 and 27 April 2025 was looking fine and sunny so the 4 of us decided on a cruise to Whiteley Green. We set off from the Arm just before lunchtime on Friday 26. It was a beautiful cruise without drama and we arrived at around 2.30pm. Once moored up I set about preparing a special garlic bread to accompany Tim's special Lasagne; it was a group effort making the bread as our oven on NB Aalin wasn't working, so it was baked in the oven onboard NB Sunbeam. We enjoyed a wonderful meal onboard NB Sunbeam, plenty of laughs and a couple of glasses of wine.

Saturday dawned with blue sky and plenty of sunshine. After a lazy morning Ruth and I headed into Bollington to shop for our evening BBQ, while Steve and Tim set about some tidying up, collecting dead leaves and stick, strimming etc. in preparation for Summer Cruising. We enjoyed fabulous food in the evening courtesy of Tim's BBQ'ing skills.

**Weekend Whiteley Green Cruise**  
**Catherine & Steve Jackson, NB Aalin / Ruth & Tim Smith,**  
**NB Sunbeam: part 2**

Steve and I cruised back to the Arm and then on to Disley on the Upper Peak Forest for a few days, basking in the glorious sunshine. During this week, in the lead up to the early May Bank Holiday there was much deliberation whether to do another cruise to Whiteley Green. The weather forecast for the weekend was looking OK, not as warm as of late, but there was no rain forecast. After a cruise to Bugsworth Basin on Friday Steve and I decided that we would cruise to Whiteley Green on Saturday 3 May, but in the end delayed leaving until the Sunday. Ruth and Tim decided to join us departing Arm around 11.30am.

Once out onto the cut we were in a NB traffic jam! With a boat ahead of us and three boats coming in our direction. The first of these boats found themselves aground, so waited for the two boats behind them to overtake and for NB's Sunbeam and Aalin to pass by. The first of the boats was a day hire boat from Bollington and the 2nd was Gordon and



and Debbie Smith onboard NB Teaghlach, they winded and cruised along behind us. Another beautiful cruise, slightly chilly and we did meet Jim and Gill Ling onboard NB Talismann2 at Poynton; they were returning from a couple of days at Whiteley Green.



We arrived at around 2.00pm and it was good to see there were also three other boats moored up there: Mike and Val Hodgkinson (NB Bliss), Bill and Gill Jewsbury (NB Polarlys) and Geoff and Shirley Taylor

(NB Hakuna Matata). There was plenty of room for NB Sunbeam and NB Aalin to moor up. Gordon and Debbie decided to wind at the next winding hole and moored up as well. We enjoyed a lovely afternoon, chatting and catching up; with the 6 boat dogs all running and chasing one and another. Michelle and Rob Shaw, together with George and Harriet also joined us, having gone to check on Fleur Denise at the Club decided to pop by in their car. George immediately was asking to do some magnet fishing, sadly all the treasure found was an "O" ring. Better luck next time George.



Impromptu get togethers are the best and the big BBQ was lit! With the majority of us joining in. Good food, laughter, made for a thoroughly enjoyable evening.





Monday morning dawned and one by one all the boats left to make their way further along the canal towards Bollington and Gurnett or back to the Arm.

The photo's capture the evenings events, plus a very interesting one taken early on Monday morning by Shirley Taylor of a Deer on the Green at Whiteley.



Thank you to Catherine Jackson for writing this article and for the pictures

# PRODUCT RECALL - IMPORTANT SAFETY WARNING

## MORCO OPEN-FLUED GAS WATER HEATER



Primo 6 Litre (MP6) &  
Primo 11 Litre (MP11)



EUP 6 Litre &  
EUP 11 Litre

**Hazard: RISK OF FIRE**  
**Please stop using the water heater immediately**  
**and isolate the gas supply to the appliance**

**You do not need to be a Gas Safe Engineer to isolate the gas using the isolation valve located under the appliance as per the photograph below.**



We have discovered that there is a risk of a gas leak in the above open-flued gas water heaters, which could result in a fire.

These products were sold into the market between 2018 and 2023 and all serial numbers sold between these dates are included in this notification. They are typically installed in static/caravan holiday homes, boats or mobile catering vehicles.

If you have one of these gas water heaters installed (including those that have had the safety upgrade), please contact us immediately so we can discuss the next steps.  
Please do not attempt to check or test the appliance yourself

Please contact Morco Products Ltd on telephone number **01482 325456**  
or by email at: **[gaswaterheaters@morcoproducts.co.uk](mailto:gaswaterheaters@morcoproducts.co.uk)**

No other Morco products are affected by this issue.

We apologise for the inconvenience this may cause however safety is our priority.

# Welcome to our New Members

- ◆ Will and Sandra Axon and their two girls Rebecca and Holly. They are taking over Shropshire Lass.



Let us have your views on the Ditchcrawler. Is there anything you would like to see as a regular feature, would you like to hear other members cruising stories are you renovating your boat and would like to do a series, then send them into [editor@nccc.org.uk](mailto:editor@nccc.org.uk).

## 2026 NCCC Calendar - Send in your pics

We all have the ability to capture a moment in time through photography, so why not consider applying your artistic endeavours towards our 2026 NCCC calendar?

The rules are simple:

- ◆ This is a members only competition
- ◆ All pictures must be landscape
- ◆ Entries must feature a canal, river or boating theme
- ◆ All entries must be submitted by email to [info@nccc.org.uk](mailto:info@nccc.org.uk)
- ◆ The closing date being 30 September



We wish you all the very best in your artistic endeavours so let's all get snapping. Thank You



North Cheshire Cruising Club have a number of facilities. Over the next couple of pages you will see lots of useful information.

**Slipway and Paint shed** - The slipway is always a popular facility so make sure you book early! Available dates are shown on the online calendar on our website. The calendar can also be used to book the paint shed or check the dates when the crane will be in the yard.

<http://www.nccc.org.uk/slipway-availability/>



**Moorings** - We have limited moorings at North Cheshire Cruising Club. If you are interested in mooring in the arm, and would like to go on our waiting list, then please contact our Moorings Officer Dave Hood

<http://www.nccc.org.uk/facilities/>



**Wharf Sales** - We stock a variety of items that can be purchased from the Wharf Superintendent Mike Robison or Water Land and Space Director Eric Roberts - these items include diesel, gas, coal, kindling, logs, electricity cards for using on your moorings. We are also now stocking Interful blacking. Do you have suggestions for other items that we can stock?

<http://www.nccc.org.uk/wharf-sales/>

**Bar Volunteers** - Can you spare a couple of hours to help out on our bar on a Friday night, or on social events. If you moor in the arm, you can also use the hours you work on the bar against your 24 hours volunteering work.

Interested: contact David 07748 073117. / Email : bar@nccc.org.uk

**<http://www.nccc.org.uk/club/bar/>**



**Membership of North Cheshire Cruising Club** - The advantages of belonging to a well established active cruising club are many.

At lot of our members have a vast experience of cruising the rivers and waterways.

Members have exclusive use of the club facilities. The club house is open on Friday nights for social gatherings and also Sunday lunch time October through to March, where a light lunch can be purchased.

There are two categories of membership: Full and Associate. New members are always welcome and applications forms for either category are available to download on our website, or you can also sign up in person on a Friday night by coming along to a social night. See Pam Russell Membership Services Director

**[http:// www.nccc.org.uk/membership/](http://www.nccc.org.uk/membership/)**

**More information is available on our website : [www.nccc.org.uk](http://www.nccc.org.uk)**



**Would you like to contribute an article to the Ditchcrawler?** Then chat with the Editorial team. If you are not sure how to write an article, let us help you. Tell us about your boat renovation, your time with the club, maybe a profile about yourself and why you joined NCCC. Email editor@nccc.org.uk







**Address**

The Wharf,  
Buxton Road,  
High Lane,  
Stockport  
SK6 8AA

**Telephone Number**

01663 765581

**Email**

[info@nccc.org.uk](mailto:info@nccc.org.uk)

**Website**

[www.nccc.org.uk](http://www.nccc.org.uk)