

# Ditchcrawler



Anderton Boat Lift taken by Catherine Jackson NB Aalin



**Summer Issue**  
**Quarterly Newsletter for**  
**North Cheshire Cruising Club**

## **North Cheshire Cruising Club**

The Wharf, Buxton Road, High Lane, Stockport SK6 8AA

### **Your Editorial Team**

Tim and Ruth Smith (NB Sunbeam)

Heather Stanley (NB Royal Oscar)

Catherine Jackson (NB Aalin)

Approval - The NCCC Board

### **Contact Us**

General Email : [info@nccc.org.uk](mailto:info@nccc.org.uk)

Editor : [editor@nccc.org.uk](mailto:editor@nccc.org.uk)

Website : [www.nccc.org.uk](http://www.nccc.org.uk)

### **Social Media Platforms**



**TheNorthCheshireCruisingClub**

### **Autumn Issue**

**Final Date for Articles 23 September 24**

**Publication Date 7 October 2024**

**If you have a contribution for the next issue, please let the Editor have your article no later than 23 September 2024. If you have any information that you would like to share with your fellow members please email me.**

**[editor@nccc.org.uk](mailto:editor@nccc.org.uk)**



# BRAIDBAR

## OPEN DAY

SATURDAY 31ST AUGUST 2024  
10AM TO 4PM

LORD VERNONS WHARF, LYME ROAD, POYNTON, CHESHIRE, SK12 1TH

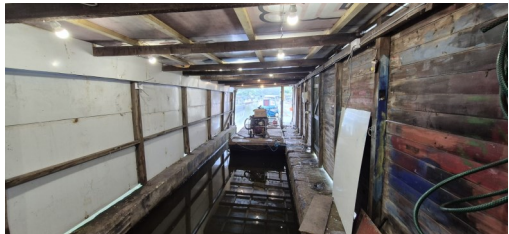
[WWW.BRAIDBARBOATS.CO.UK](http://WWW.BRAIDBARBOATS.CO.UK)

## Recent Work Parties

Work continues on the arm to the new paint shed, gardening and painting the club house. The bucket for the dredger and the refurbished hammer arm were put on the pontoon ready to go back on the dredger.



## Lighting in the Paint Shed



Pics from Mike Robison



Catherine, inspired by Lyndsay weeding their NB Out, Back & Home mooring area carried on weeding the path from there to the end of the arm. Here are some of the pics that Catherine took.



Thank you to everyone who joins in the work parties each month - your help is always appreciated

# **Weaver Navigation Cruise**

**Catherine and Steve Jackson, NB Aalin**  
**Ruth and Tim Smith, NB Sunbeam**

On 19 June 2024 the four of us set off from the Arm in the afternoon heading towards Marple and the Peak Forest canal to cruise the Cheshire Ring, with a deviation off the Trent & Mersey Canal to descend the Anderton Boat lift and explore the Weaver Navigation. More on the Cheshire Ring another time.



We had a booking at 10.45am to descend The Anderton Boat Lift, one of the Seven Wonders of the Waterways. Leaving our berth for a short cruise to the Boat Lift Mooring to tie off and await instruction from the CRT Lift Operator; time enough to nip into the visitor centre to buy post descent Magnum Ice Creams.

We were soon underway and on the instruction of the CRT operator we made our way forward and into the lift caisson, basically a bath with a plug at each end. And down we went at warp speed of Mach 2! The descent is 50' and from entering to leaving took approximately 30 minutes. Once exiting we turned left and headed to the visitor mooring for the post descent debrief and Magnum! We continued on with our four day cruise passing through Northwich, where the River Dane enters the Weaver and on to Hunts Locks, where we had a delay due to CRT Lockkeeper staffing, and then on to Vale Royal Locks and on to Winsford. Skipper and crew of both Aalin and Sunbeam thoroughly enjoying the width and depth of the Navigation.



We were blown away with the size of Hunts and Vale Royal Locks; we've done many single locks, quite a few double locks, but never have we been in a lock where three narrowboats can enter a lock abreast! A sight to behold!

A further three miles and we'd arrived at our destination for the night; the Red Lion visitor mooring almost at the end of the navigation, just before the Winsford Flash.

Another glorious morning greeted us, and as we left our berth on NB Aalin quite a few other NB's appeared preventing NB Sunbeam from leaving her berth. We wended at the entrance to the Marina and made our way back to where we'd berthed. As we had walkie-talkies we were able to communicate with Sunbeam and Skipper Ruth executed the manoeuvre of the trip by turning around just after we'd passed them and before any of the other boats had even reached the official winding point.

Retracing our steps we were soon at Vale Royal Locks; ringing ahead, we were advised to moor up on the pontoon lock landing until they were ready for us. Within a short time the three other boats were alongside us and we waited. Once through this lock we had another half hour cruise before Hunts Locks, the last lock of the day. Here I pulled on my big girl pants and took the helm to steer her in and out of the lock. Phew! No knocks.

A short cruise and we were at Northwich where we stopped for a shop at Waitrose!

Back on board and we continued to Barnton Mooring where we enjoyed a BBQ on the bank adjacent to the mooring.

We had two locks to do quite early on in the day, Saltersford Locks and Dutton Locks.



All the locks on the Weaver are manned and only CRT staff can operate them. At each lock there are two locks either side a small one that can carry three narrowboats of around 65ft and a large one that can carry around 15 narrowboats. The Hunts Locks and Vale Royal Locks heading towards Winsford only the small locks are in operation as sadly the large ones are broken, whereas Saltersford and Dutton Locks in the direction of Weston Point the large ones are in use. Each of these have lock gates in the middle making two smaller locks, these are not used anymore.

At Dutton Lock the volunteer lock keeper explained that a few hundred meters before the lock on a stretch of the navigation that is the actual River Weaver where there are sluice gates and also an Archimedes screw, Dutton Hydro Power Plant, which can power the lock. Very interesting indeed, so once through the lock we moored up and walked to have a look. It was well worth it! Impressive!

Back on board and we continued along taking in the sights on the river bank. When we got to the end of the Weaver Navigation at Weston Point it was an about turn to retrace our steps. I'd said earlier that Ruth had executed the manoeuvre of the trip, then Tim undertook a flawless turn, which came in a very close 2nd to Ruth's. We took the opportunity to moor up at Weston Marsh Lock, which enables access on/off the Manchester Ship Canal. As we were looking around a crew of CRT lock keepers and a couple of other chaps wearing life jackets appeared. The lock gates were open onto the MSC and they were obviously waiting for a boat to come in from the MSC (privately owned by Peel Holdings) for passage on the CRT owned Weaver Navigation. It was the Daniel Adamson, a restored Steam Boat that does trips to Ellesmere Port from her mooring along the Weaver at Acton Bridge. How lucky were we to be there at the exact right time to witness the lock in operation. Despite its size it only has a rise of around three feet onto the Weaver Navigation.



Continuing on our cruise back we stopped at the mooring just before Dutton Lock.

We'd enjoyed glorious sunshine on our time on the Navigation until now when there was a real change; rainy, windy, chilly. Guess that was summer then!

We were ready for the off to ascend Dutton Lock by 11.15am when a couple of boats approached and joined us. We were soon at the level of the upper water, gates open and away we went, onto Saltersford Locks. As the lock keeper of this lock was forewarned of four craft on his approach the gates were open and away we went straight in. A short cruise to our mooring at The Anderton Boat Lift, ready for our ascent in the morning.

A rainy start to the day, complete contrast to the warmth and sun of our descent. Moored on the pontoon waiting area for the Anderton Boat Lift for our instructions from the CRT operator. Only a couple of minutes before we were directed in and once again trapped in the caisson. The ascent experience was no less impressive than the descent. Definitely worth doing if anyone gets the chance; either on

your own boat or the CRT pleasure boat.

Once out of the caisson and onto the aqueduct leading to the Trent & Mersey we did a right turn to continue our journey of the Cheshire Ring.

More on the Cheshire Ring journey in a future issue of the Ditchcrawler





In the past twelve months a number of items have been donated to the club. On behalf of the board, we would like to say thank you. If I have forgotten anyone, please let me know and I will add you in to the next issue

- ◆ Chris Potter - a Honda generator
- ◆ Bob Barlow - Cordless Hedge trimmer
- ◆ Nigel Stanley - Strimmer, MacAlister pressure washer, 25ft hose pipe, 5 x 25ltr containers
- ◆ Jim Ling - Rubber straiaks and other items for the workshop
- ◆ Tim Smith - Use of his trailer for club use.
- ◆ Mike Hodgkinson - Barbecue

## Welcome to our New Members

- ◆ James Attwood and Donna Hitchen - Braidbar Boats NB Reginald
- ◆ Lee Marragh and Sonia Burke - Cruiser River Moon
- ◆ Mark Husband - NB Squeak by
- ◆ John Worthington-Jones - NB Evan



## **Weekly Events**

- ◆ Friday Night Social in the clubhouse 8pm till late (Re-opens 6 September 2024)
- ◆ Sunday lunches start again in October

## **Monthly Events**

Monthly Work Party - Second Saturday of each month with Pie or Sausages and a pint from 1pm (please make sure you sign in to the book in the workshop)

- ◆ Saturday 10 August
- ◆ Saturday 14 September
- ◆ Saturday 12 October
- ◆ Saturday 9 November
- ◆ Saturday 14 December

## **Social Events**

- ◆ Saturday 24 August - Summer BBQ
- ◆ Saturday 14 September - MacMillan Coffee Morning
- ◆ Saturday 19 October - Laying up supper
- ◆ Wednesday 27 November - Wreath Making with David Mason
- ◆ Wednesday 4 December - Flower Demonstration with David Mason
- ◆ Saturday 7 December - Christmas Party

## Heart bypass operation on the drains at Whiteley Green

Written by Mike Robison NB Meredith Rose



In what feels like open heart surgery, fingers crossed there'll be no further flooding as water from the road now goes direct to the canal. However, the key to 100% success is getting the council to clear the road drain on the canal side of the road. We've cleared as much as we can out of it, but if it was cleared fully, the water would not reach the overflow, which is what is causing our problem.

Little bit more work is needed next week, backfilling and sealing of final connection, but it definitely works. We tested it successfully.



Ps it takes approx. 30 seconds for the water to get from the road to the canal.

Pipe exits into the canal behind the first pile, so if you are there and it is raining heavy, have a look and check if it's flowing.

Let us know, please.



Special thanks to Martin of narrowboat Taniwha who gave me and Eric much needed assistance, he got proper stuck in, his help was invaluable.



North Cheshire Cruising Club Ltd.

*The Wharf, Buxton Road, High Lane, Stockport SK8 8AA..*



# AUGUST BANK HOLIDAY



## B.B.Q.



**Sat 24 August 2024**

**Starts 12 Noon**

Come and join us for the annual Bank Holiday barbecue held on the triangle at the NCCC.

You will need to bring your own chairs, beers, wine or soft drinks, enough for the afternoon.

BBQ food will be provided.

Come and have a great time with other Members of the club.

# AWCC Diamond Celebrations 09/08/24 - 11/08/24 : Catherine and Steve Jackson : NB Aalin



On receiving a notification that the Association of Waterways Cruising Clubs would be marking their 60th year with a weekend of celebrations at the Litchfield Cruising Club at Huddlesford, Steve and I checked our calendar and decided to make the journey on board NB Aalin to be a part of the event. We duly completed our mooring booking, and meal requirements, sent them off together with our payment for the meals.

Booking accepted; we set off after our cruise to Bugsworth Basin on 31st July.... after a deviation to Alrewas, an emergency unplanned stop after Fradley due to a mooring rope around the prop, we arrived at the LCC in the early evening of 9 August; we had been sent extremely good joining instructions and had a welcoming reception by Bob from LCC and our very own Mike Hodgkinson, NB Bliss. Once moored and settled we went to get our welcome pack which gave us the itinerary for the weekend.



Not wanting to miss out on anything we signed up for all meals and all entertainment. Friday evening was a buffet, quiz and a general get to know each other.



Steve and I teamed up with a couple and their son for the quiz; I have to say I was pleased with our score of 36 1/2 out of 50. The winning score was 38. We didn't let NCCC down!





This was the precursor to the event being opened on Saturday morning by the Chief Executive of the Canal & River Trust, Richard Parry, he was very keen to express his gratitude and enthusiasm about the part the AWCC plays in representing the Cruising Clubs across the network. There was cake and Prosecco, interesting talks about a couple of canal restoration projects, light hearted gambling, raffles, Fish & Chips and evening entertainment provided by a local group called “No Direction”. The evening raised £490.00 for

Parkinson’s Charity, which the AWCC made up to £500.00.

Steve and I had opportunity to talk to Matthew Symmonds, Head of Customer Service at CRT who was very keen to hear our experiences of the network, both bad and good, I also found myself in a position to talk to Richard Parry, he seemed genuinely interested in all I had to say about the canal structure and asked if we had any issues on our trip there.



It was great to spend so much time chatting to like minded fellow boaters about our various cruises, near misses and the like.



We received an extremely warm welcome from the Lichfield Cruising Club members and their hospitality over the course of the weekend was fantastic. The

celebrations ended on Sunday morning after Chaplains from The Waterways Chaplaincy held a service and gave a blessing to all the boats that had attended the event



Part of the services that North Cheshire Cruising Club offers is our slipway facilities. Every Thursday a dedicated team come to the arm from near and far, in all weathers, to bring boats in and out of the water for the owners to have survey's done, bodywork or just for the owners to black their boats.

A big thank you goes out to Julian Swinden, Ian Hooper, Ian Jewell, Eric Roberts and Mike Robison.

## 2025 NCCC Calendar Competition



We all have the ability to capture a moment in time through photography, so why not consider applying your artistic endeavours towards our 2025 NCCC calendar?

Thank you to those who purchased this year's calendar, the first of its kind for NCCC. To build on this success, we are organising a competition to choose the 12 pictures to represent each month of next year's calendar and an overall winner for the front cover. A selection of runners up will also be featured on the inside cover pages. The rules are simple:

- ◆ this is a members only competition
- ◆ entries must feature a canal, river or boating theme
- ◆ all entries must be submitted by email to [info@nccc.org.uk](mailto:info@nccc.org.uk)
- ◆ the closing date being 30 September
- ◆ the winning entries will be revealed at the Laying Up Supper

We wish you all the very best in your artistic endeavours so let's all get snapping, painting, sculpting, knitting, modelling and generally creating. All artistic media will be considered.

Thank You



# It's time for Coffee Morning and you're invited



**Bill Wilkinson invites you to his  
Coffee Morning to raise money for Macmillan.**

**There is a cuppa with your name on it.**

When: Saturday 14 September 2024

---

Where: North Cheshire Cruising Club

---

RSVP: not required

---

From: 10am to 1pm

---

More info: Join us to raise money for a good cause

---



Macmillan Cancer Support, registered charity in England and Wales (261017),  
Scotland (SC039907) and the Isle of Man (604). Also operating in Northern Ireland.  
MAC19622\_INVITE

**MACMILLAN  
CANCER SUPPORT**

## What a day for a 'tow'

Written by Heth Stanley NB Royal Oscar



One of our new members James, purchased a cruiser from one of our members, Keith (previously Chris Potters boat). This cruiser NB Fleur D'Eau was on hard standing for a long time, and needed some work doing to it to get it back in the water. James spent many weekends and free time in the week doing the work. Once it was nearly ready to go in the water, James asked Nigel from NB Royal Oscar, if he would assist him in get the boat to his mooring at New Mills Marina by towing him!! Of course, Nigel said yes, and with the assistance of Mike Robison who organised for his boat to go in the

water when he next had a crane in the yard, James was soon to be on his way with his new home to his new mooring.



On a glorious Saturday morning at 8am, James, Nigel, Heather, Sharon (NB Penny Peace) and Mark, (James neighbours at New Mills) got the boats ready to tow and off we went.



Once we got to Marple, Sharon and Mark left the boats and walked ahead of us to open all the bridges - this was a great help.

It took us 4 hours to get to New Mills arriving at 12 noon, with only one slight sidewind just before we got near Swizzells.

It was an experience to do, but would happily help other members out if they needed a 'tow'

Heth NB Royal Oscar



**Save the date**

**Sunday 3 November 2024**

**All members are welcome to attend**

**More details of the vacancies will be sent out on email  
by the end of August**

## **An act of kindness to a fellow boater by Catherine Jackson, taken from the NB Aalin Facebook blog**

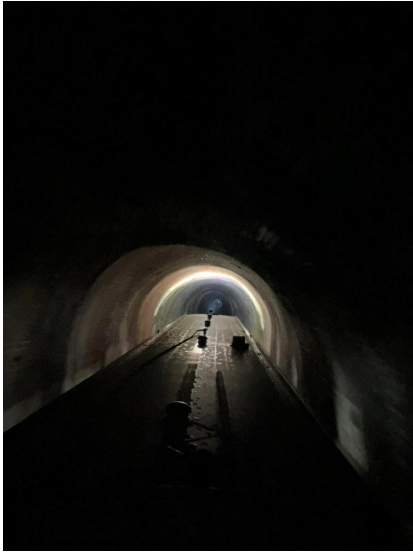
Evening folks! Well, what a day.... setting off early from our mooring just before 8.00am, with the intention to do a small shop at Lidl Kidsgrove (other supermarkets are available along the canal!). Around the bend from where we were moored a boater was just about to cast off. Steve established that he wasn't in any hurry and for us to go ahead. Not much further on and we were at the Hall Green stop lock, I set about getting the level up to open the gates and the other boater had tied off and approached us to help. Naturally you engage in conversation; and he strangely asked if I was comfortable steering the boat..... I said I preferred doing the locks, but would take the helm if required. His reply was about going through a tunnel; to which I quickly said nope!



He then explained that he suffers from claustrophobia and was wondering if I would take his boat through the Harecastle tunnel for him. Strange aside; I wouldn't be confident taking Aalin through a tunnel on my own, never mind someone else's "home" for a mile underground. So politely declined. I helped with setting the lock for him and obviously conversation continued....

Back on board Aalin: Steve and I agreed the only way we could help was for us to moor up as planned and as I hit Lidl Steve would take this chaps boat through the tunnel for him as he would then reposition his car at Westport Lake and therefore able to return by car. Our slot wasn't until 2.00pm, and before midday was free passage. As we'd arrived at the last mooring spot before Lidl at 9.00am, it was doable. And that's what we did! Lidl shop done, it did mean I had some "me" time to vacuum, who am I kidding! Wordle, Quordle and Octordle completed!





As soon as Steve and our new friend Martin arrived back at Aalin we were on a mission to make our booked slot of 2.00pm through the tunnel, which we made with time for Steve to have his lunch before his second passage South of the day.

Through the tunnel and safely moored up at Westport Lake. A good catch up with Martin and hearing about his 4 year journey from a sail-away to fitout...still in progress. Another pleasant school day was had by everyone, new things learnt from our experience.



If you like this blog and have the social media platform 'Facebook', then follow NB Aalin and read more about their travels around the canal network.

## The Montgomery Canal - Jan and Martin Tattersall

In June Jan and Martin were out cruising - We have just been down to the limit of navigation on the Montgomery Canal. The restoration has moved on! It's now 1½ miles further and boats can cruise to Bridge 85. This last mile and a half opened last year but we didn't know and we were turning round at the previous limit when an old chap told us to go further on to another winding hole. It's a big winding hole with plenty of mooring space. Here's some photos of the next section they're working on.





STOKE-ON-TRENT BOAT CLUB  
Endon Wharf Post Lane ST9 9DU

**50<sup>th</sup>** ANNIVERSARY of the  
REOPENING of the  
**CALDON CANAL**



**Saturday 21st September**


**10am - 4pm**      **free entry**

live music    classic vehicles

archive photos    boat trips

stalls    food    all day bar

**Parking available**



Let us have your views on the Ditchcrawler. Is there anything you would like to see as a regular feature, would you like to hear other members cruising stories then send them into [editor@nccc.org.uk](mailto:editor@nccc.org.uk).



Share Your Thoughts



**We have been doing a little revamp of the website. Let us know if there is something else you would like us to add. Are we giving you enough information?**

**Updates : Members Section - new handbook and procedures file / new 2024/25 membership book**

**New Tab : Your wharf - giving you information on everything to do with the wharf**

Welcome to North Cheshire Cruising Club

Email [postmaster@nccc.org.uk](mailto:postmaster@nccc.org.uk)

Slipway Availability

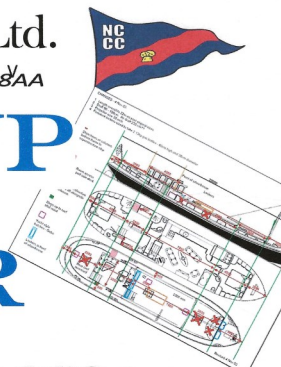
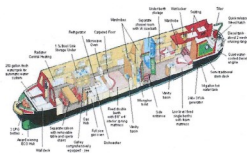
[Click here to view the calendar](#)



North Cheshire Cruising Club Ltd.

The Wharf, Buxton Road, High Lane, Stockport SK8 8AA

# LAYING UP SUPPER



19<sup>th</sup> October 2024  
7 for 7.30pm.

Entertainment

Entrance Fee



## Jean Pasquill

### Meal by Caterer

hot pot – Succulent meat and gravy topped with potatoes that are tender underneath and crisp on top served with pickled red cabbage, and seasonal vegetables, followed by apple pie n custard or fresh cream.

### Please note!

vegan Hotpot option by preorder only.

Contact me to book on the event

: [postmaster@nccc.org.uk](mailto:postmaster@nccc.org.uk)

or phone on: 07735 036267



North Cheshire Cruising Club have a number of facilities. Over the next couple of pages you will see lots of useful information.

**Slipway and Paint shed** - The slipway is always a popular facility so make sure you book early! Available dates are shown on the online calendar on our website. The calendar can also be used to book the paint shed or check the dates when the crane will be in the yard.

<http://www.nccc.org.uk/slipway-availability/>



**Moorings** - We have limited moorings at North Cheshire Cruising Club. If you are interested in mooring in the arm, and would like to go on our waiting list, then please contact our Moorings Officer Dave Hood

<http://www.nccc.org.uk/facilities/>



**Wharf Sales** - We stock a variety of items that can be purchased from the Wharf Superintendent Mike Robison or Water Land and Space Director Eric Roberts - these items include diesel, gas, coal, kindling, logs, electricity cards for using on your moorings. We are also now stocking Interful blacking. Do you have suggestions for other items that we can stock?

<http://www.nccc.org.uk/wharf-sales/>

**Bar Volunteers** - Can you spare a couple of hours to help out on our bar on a Friday night, or on social events. If you moor in the arm, you can also use the hours you work on the bar against your 24 hours volunteering work.

Interested: contact Lyndsay 07825 335146 / Email : [bar@nccc.org.uk](mailto:bar@nccc.org.uk)

<http://www.nccc.org.uk/club/bar/>



**Membership of North Cheshire Cruising Club** - The advantages of belonging to a well established active cruising club are many.

At lot of our members have a vast experience of cruising the rivers and waterways.

Members have exclusive use of the club facilities. The club house is open on Friday nights for social gatherings and also Sunday lunch time October through to March, where a light lunch can be purchased.

There are two categories of membership: Full and Associate. New members are always welcome and applications forms for either category are available to download on our website, or you can also sign up in person on a Friday night by coming along to a social night. See Pam Russell Membership Services Director

[http:// www.nccc.org.uk/membership/](http://www.nccc.org.uk/membership/)

**More information is available on our website : [www.nccc.org.uk](http://www.nccc.org.uk)**



**Would you like to contribute an article to the Ditchcrawler?** Then chat with the Editorial team. If you are not sure how to write an article, let us help you. Tell us about your boat renovation, your time with the club, maybe a profile about yourself and why you joined NCCC. Email [editor@nccc.org.uk](mailto:editor@nccc.org.uk)





**Address**

The Wharf,  
Buxton Road,  
High Lane,  
Stockport  
SK6 8AA

**Telephone Number**

01663 765581

**Email**

[info@nccc.org.uk](mailto:info@nccc.org.uk)

**Website**

[www.nccc.org.uk](http://www.nccc.org.uk)